



BRINGING
THE
OUTSIDE
IN

Data | SkyVision

Roof Lights

PRODUCT DESCRIPTION

VITRAL SkyVision is a flat roof light that maximises the amount of natural daylight, without intrusive framing being visible from beneath. Unlike other modular roof lights, our modular double glazed flat roof lights (SkyVision Fixed and Comfort) are impact tested as standard to TN66/67 to protect those carrying out roof maintenance and cleaning (up to 2 m²).

FINISH

Standard colour for SkyVision is dark grey (RAL 7043) 30% Matt. The internal kerb finish is white.

CATEGORY

There are five SkyVision types - **Fixed, Comfort (Opening), Circular, Walk-On** and **Ecoline**.

SKYVISION FIXED

SkyVision Fixed is non-venting variant and a perfect solution where natural light and performance are concerned.



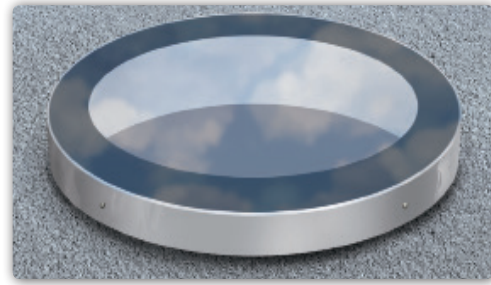
SKYVISION COMFORT (OPENING)

SkyVision Comfort is a solution where light and natural ventilation are required. An elegant and functional solution, with a fully integrated chain motor concealed within the kerb. The chain stroke length is 300 mm.



SKYVISION CIRCULAR

SkyVision Circular includes a circular top plate fitted with gaskets, to be placed on top of the upstand (not VITRAL).



SKYVISION WALK-ON

SkyVision Walk-On is a fixed roof light suitable for situations that require foot traffic. SkyVision Walk-On uses a 52 mm double glazed unit to support a load of up to 500 kg per m². It is possible to add a silk print for a non-slip surface. SkyVision Walk-On is classified as R11 with anti-slip properties according to DIN 51130.

SKYVISION ACCESS

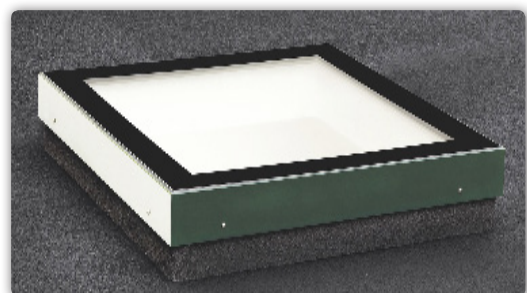
SkyVision Access can be used for safe and secure access for roof maintenance, smoke ventilation, (e.g., at the top of a staircase) or natural ventilation. The fully concealed motors provide unobstructed openings with operation by means of a pressure switch or an emergency fireman's override switch. SkyVision Access can be programmed for incremental opening when used for natural ventilation.

SKYVISION LINEAR

SkyVision Linear is a unique solution that makes it possible to fit roof light sections together to form a continuous system without the need for additional structure. Some or all can be opened without additional structure support.

SKYVISION ECOLINE

With a U-value of 0.65 W/m²K for the entire roof light, the SkyVision Ecoline is the most energy efficient of all the SkyVision products. SkyVision Ecoline comes with a robust and highly insulated triple layered glass. A strong solution when environmental aspects are top priority.



MATERIAL

SkyVisions are constructed from glass, aluminium and wood. They come complete with kerb for installation onto flat and pitched roofs, up to 30°.

GLASS TYPE AND U_g

All SkyVision roof lights have 115 mm silk screen printing along the edge for UV protection of the seals.

Standard glass up to 2 m²:

- 32 mm low 'e' double glazed unit: 8 mm toughened, 16 mm alu spacer argon, 8.76 or 10.76 mm low 'e' float laminate with 0.76 mm PVB. $U_g = 1.1 \text{ W/m}^2\text{K}$.

Standard glass 2 m²- 2,8 m²:

- 32 mm low 'e' double glazed unit: 8 mm toughened, 14 mm alu spacer argon, 10.76 mm low 'e' float laminate with 0.76 mm PVB. $U_g = 1.1 \text{ W/m}^2\text{K}$.

Standard glass 2,8 m²- 4,0 m²:

- 32 mm low 'e' double glazed unit: 8 mm toughened, 12 mm alu spacer argon, 12.76 mm low 'e' float laminate with 0.76 mm PVB. $U_g = 1.1 \text{ W/m}^2\text{K}$.

Ecoline glass:

- 32 mm low 'e' triple glazed unit: 6 mm toughened, 6 mm TGI spacer krypton, 4 mm toughened low 'e', 8 mm TGI spacer krypton and 8.76 mm laminated with 0.76 mm PVB low 'e'. $U_g = 0.7 \text{ W/m}^2\text{K}$.

Walk-On glass:

- 6+8+8 mm or 8+8+8 mm or 8+10+8 mm TVG laminated with 2x1.52 mm PVB, 16 mm TGI spacer, 8.76 or 10.76 mm laminated with 0.76 mm PVB low 'e'. $U_g = 1.3 \text{ W/m}^2\text{K}$. Walk-On glass with big dots (15 mm) is classified as R11 with anti-slip properties according to DIN 51130.



U-VALUE

Fixed, Circular and Comfort:

- U-value for the unit overall is $0.97 \text{ W/m}^2\text{K}$.*

Ecoline:

- U-value for the unit overall is $0.65 \text{ W/m}^2\text{K}$.*

Walk-On:

- U-value for the unit overall is $1.06 \text{ W/m}^2\text{K}$.*

* All U-values are calculated in 0° roof pitch based on external surface area: Arc = 3.72 m²

DIMENSIONS, POSSIBILITIES & LIMITATIONS

- Can be installed from 0°-30°. Minimum 4° is recommended.
- Kerb is supplied from 150 mm up to 600 mm, depending on project requirements.

SkyVision is manufactured according to customer specifications and is available in the following sizes:

- **Fixed:** 250-3000 mm, max clear internal area 4 m²
- **Comfort:** 600-3000 mm, max clear internal area 4 m²
- **Circular:** 900-1350 mm (diameter), max clear internal area 1.43 m²
- **Walk-On:** 250-2000 mm, max clear internal area 2 m²
- **Ecoline:** 300-2000 mm, max clear internal area 2 m²
- **Access:** 1000x1000 mm max clear internal, 245 mm high frame
- **Linear Fixed:** 250-2900 mm, max clear internal area 2.8 m²
- **Linear Comfort:** 600-2000 mm, max clear internal area 2 m²



WARRANTY

VITRAL SkyVision comes with a 10 year warranty and a 2 year warranty for opening mechanisms. VITRAL SkyVision conforms to the most up-to-date regulations and is CE marked according to DS/EN 14351-1. Tests are carried out by the Danish Institute of Technology and DELTA and includes the following standards: DS/EN ISO 717-1, EN 10077-1 and EN 10077-2, EN 12207 and EN 12208. VITRAL has the ISO 9001:2008 certification.

SUPPORT & CALCULATION SERVICE

At VITRAL, we are always ready to answer your questions about roof glazing, flat roof lights, U-values, static panel calculations, budgets and details.

ABOUT VITRAL

VITRAL is renowned for manufacturing roof lights that offer exceptional quality, performance and aesthetics.

CONTACT VITRAL

VITRAL UK LTD.

83 High Street
Linton
Cambridgeshire, CB21 4JT

Tel: +44 1223 499 000

vital-uk@vital.co.uk
www.vital.co.uk